



# MONTHLY MEMBERSHIP PROGRESS REPORT

District 27 B1

Results as of: 01/31/2018

GMT: MICHAEL MOLENDIA

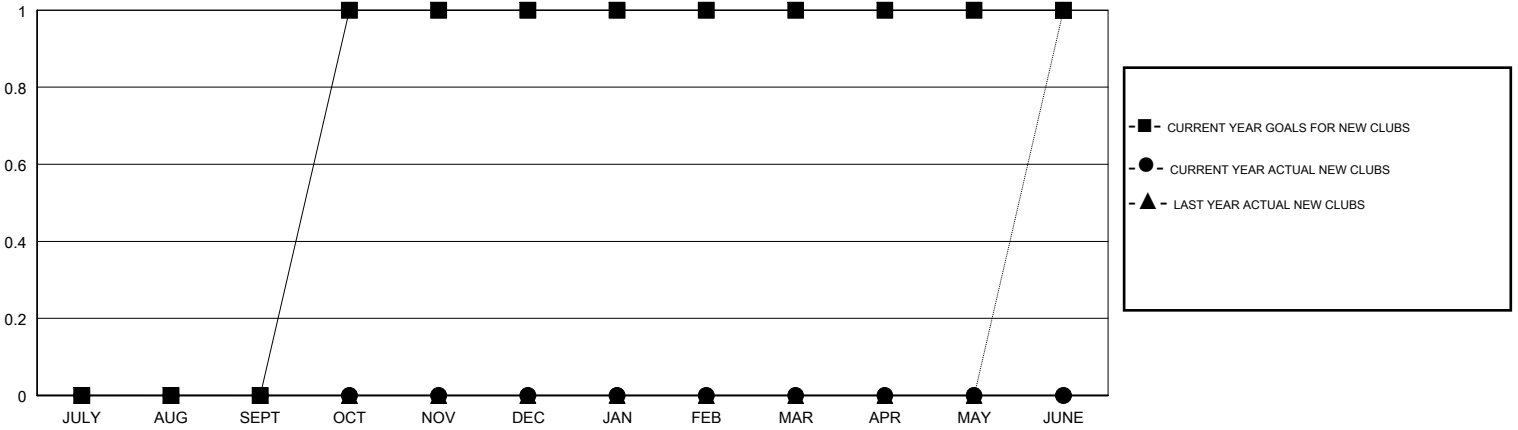
LOCATION WISCONSIN

GMT CA

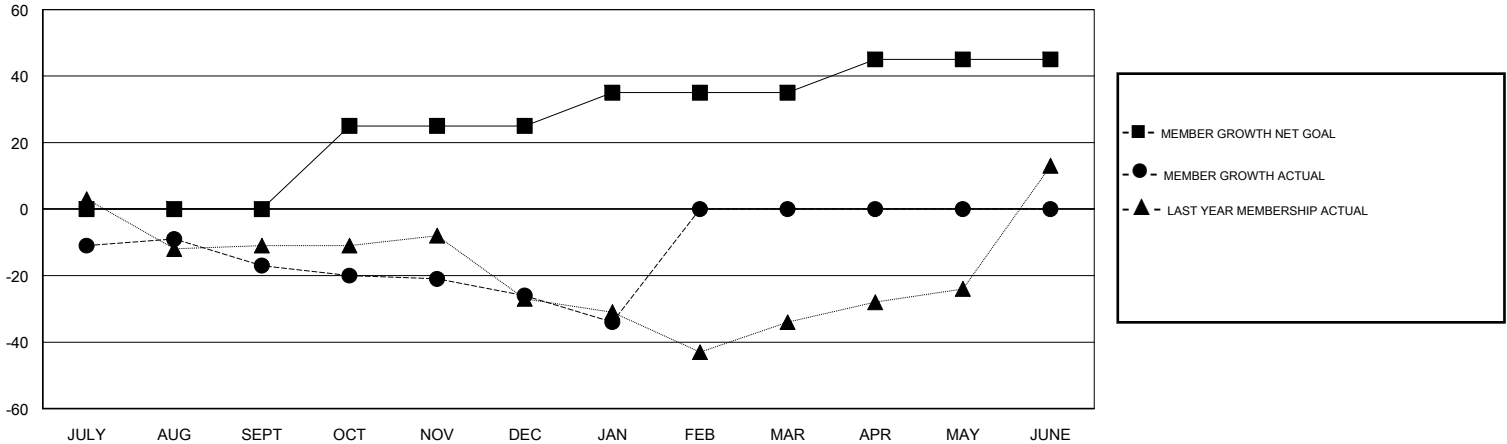
Clubs			
RESULTS FOR 2017-2018			
QUARTER	NEW CLUB GOAL	NEW CLUBS	DROPPED CLUBS
JULY/AUG/SEPT	0	0	0
OCT/NOV/DEC	1	0	0
JAN/FEB/MAR	0	0	0
APR/MAY/JUNE	0	0	0

Members			
RESULTS FOR 2017-2018			
QUARTER	MEMBER GROWTH NET GOAL	MEMBER GROWTH ACTUAL	DROPPED MEMBERS ACTUAL (including transfers)
JULY/AUG/SEPT	0	28	40
OCT/NOV/DEC	25	49	53
JAN/FEB/MAR	10	13	21
APR/MAY/JUNE	10	0	0

GOALS AND ACTUAL NEW CLUBS CUMULATIVE



GOALS AND ACTUAL MEMBERS CUMULATIVE



DROPPED CLUBS: 0
------------------

37 CLUBS OF 69 ADDED 1 OR MORE NEW MEMBERS

GENDER DISTRIBUTION	
MALE	1,569 (79.04%)
FEMALE	416 (20.96%)
Women Percentage Fiscal Year Goal: 22%	

DROPPED MEMBERS	
DECEASED	23
CLUB CANCELLED	0
OTHER	91
<b>TOTAL</b>	<b>114</b>

[CLICK HERE FOR CUMULATIVE MEMBERSHIP DATA](#)

TOTAL FAMILY UNIT MEMBERS	336
FAMILY MEMBERS PAYING HALF DUES	171